



GEORGIA
HEALTH
INFORMATION
NETWORK

2014 Annual Report

Mission:

To facilitate a statewide health information network for Georgia that is trusted and valued by all stakeholders; works to improve health care coordination and reduces costs; and establishes a solid foundation for long-term financial sustainability.

Vision:

To create a healthier Georgia through the use and exchange of electronic health information to improve patient-centered health care, increase efficiencies and improve the health of the state's entire population.

Purpose:

To close the patient information gap across care settings by electronically connecting disparate systems and data sources to support improved quality of care, better health outcomes and reductions in cost.



Table of Contents

Message from Leadership.....	3
About GaHIN.....	4
Network of Networks.....	5
Products and Services	6
Milestones	7
Strategies and Priorities.....	8
Financial Overview.....	9
Executive Committee/Board of Directors	10-11

A MESSAGE FROM LEADERSHIP

Dear Friends and Colleagues,

Nearly 20 years ago, healthcare stakeholders from across Georgia conceived of a groundbreaking idea. A concept so basic, yet so challenging, it would take most of the next two decades to make it a reality. Simply put, the idea called for the secure electronic exchange of patient health data across healthcare settings, giving providers a view of their patient's health information at the point of care.

This idealistic notion of technology-driven, patient-centered care was born out of necessity, frustration and innovative thinking of what could be. Today this concept has become a vital component of Georgia's modern healthcare community as the statewide Georgia Health Information Network (GaHIN).

Physicians and other providers understand the importance of having relevant, timely patient information so they can make informed decisions and provide the best care possible. That is what GaHIN delivers every day. Our network technology improves patient care by providing secure access to information, and is available to providers who need it, where they need it and when they need it.

These are historic times in Georgia healthcare. The past few years have seen an exponential expansion of technology through programs and initiatives such as Meaningful Use, the Georgia Medicaid Incentive Payment Program, and the Health Information Exchange Cooperation Grant program. GaHIN has worked closely with its partners, the Georgia Department of Community Health (DCH) and the Georgia Health IT Regional Extension Center (GA-HITREC) to launch the Georgia statewide health information exchange (HIE) network and deliver GeorgiaDirect and Georgia Connected Care, data exchange products that are the foundation of widespread interoperability across Georgia's healthcare ecosystem.

Other significant milestones include GaHIN's connection with three of the largest health systems in the Southeast, Emory Healthcare, Grady Health System and Children's Healthcare of Atlanta, our connection to four state agencies that include Georgia Medicaid and Public Health, and our links to the Nationwide Network and DirectTrust. With greater numbers of healthcare providers joining the Georgia statewide network monthly, we anticipate that by 2017, 80% of all healthcare providers in Georgia will be connected to GaHIN.

On behalf of the GaHIN Board of Directors, members and staff, we are very pleased to present the inaugural GaHIN Annual Report, a progress report describing activities for fiscal years 2013 and 2014. In this annual report, you'll find information on GaHIN's advances and continued collaborative work with the private and public sectors to further our mission for widespread connectivity to make high quality care more accessible in Georgia. Our goal is not simply to connect technology, but to join together all members of the Georgia healthcare ecosystem to slow the rise in healthcare costs, enhance the quality of care, and improve health outcomes of all Georgians.

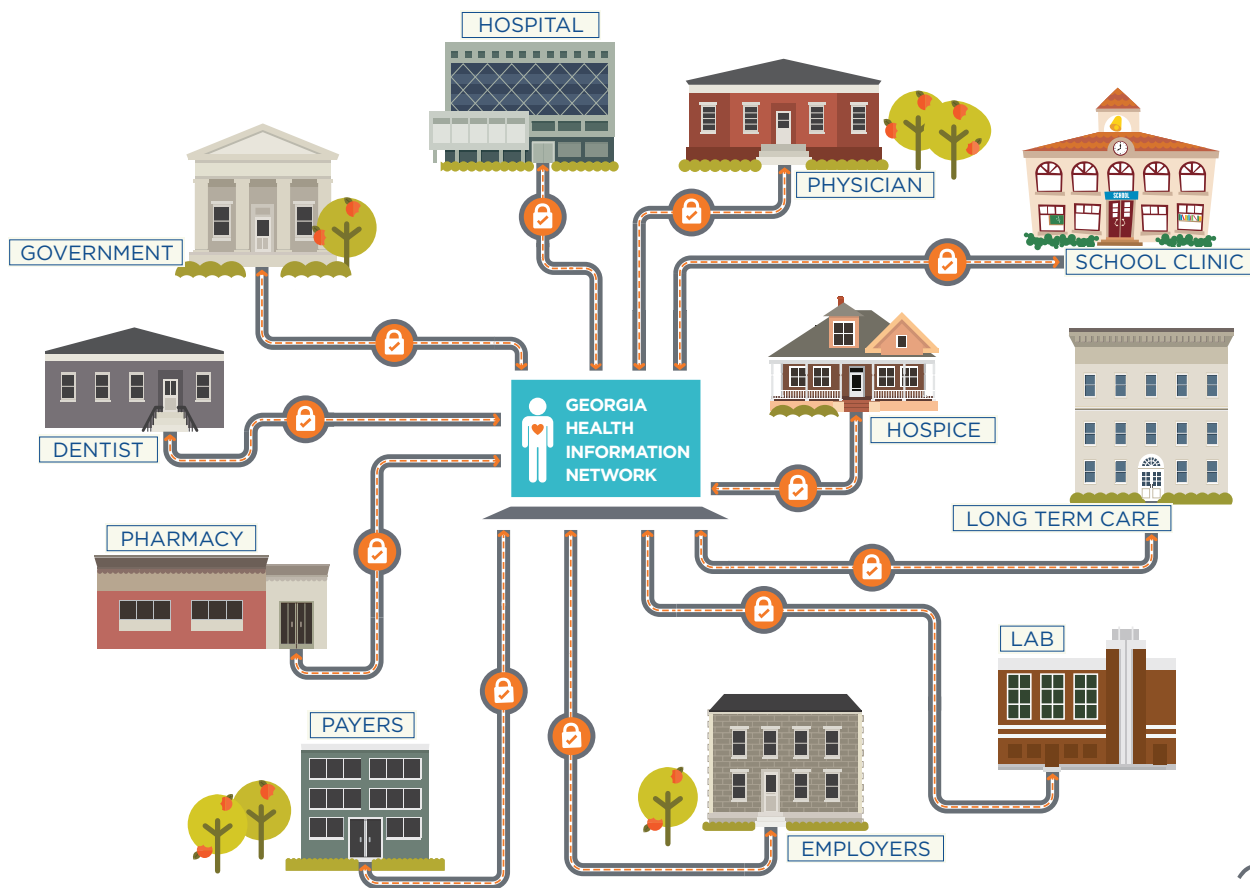
We would like to thank the many individuals and organizations that have collaborated with us in advancing health IT in Georgia, including our Board of Directors and the healthcare and business communities they represent. Through this strong support, GaHIN is making tangible progress in creating a framework to improve healthcare efficiency and quality.

Dr. Dennis L. White, MSIT, DHA
Chairman, GaHIN

Dr. Denise Hines, PMP, FHIMSS
Executive Director, GaHIN

CONNECTING GEORGIA

GaHIN (pronounced gee-hin) is a non-profit organization dedicated to creating a healthier Georgia through the use and exchange of electronic health information. GaHIN facilitates the use and secure exchange of patient health information so providers have the information they need at the point of care. The result is improved quality of care, better health outcomes and reductions in cost.



2014 ACHIEVEMENTS

Connected members include regional health information exchanges (HIEs), state agencies, hospital systems, physician groups and individual practitioners. The Georgia Network currently serves counties across the entire state and has more than 6,000 participating providers and organizations.

In addition to connecting Georgia providers, GaHIN is also successfully linking to neighboring states to allow the seamless sharing of medical information immediately and securely across state lines. GaHIN connected to the South Carolina HIE in 2014, and plans to link with the East Tennessee and Alabama HIEs in 2015.

State and National Connectivity

In 2014, GaHIN is connected to the national eHealth Exchange and is also a member of DirectTrust, which enables its members to securely exchange information nationally with other providers who are using Direct. GaHIN's products, Georgia ConnectedCare and GeorgiaDirect, help its members achieve Meaningful Use Stages 1 and 2. Products are free for credentialed, authorized Georgia providers.

3 major health systems in Georgia connected

Connection to the Nationwide Network and DirectTrust

4 state agencies and 1 care management organization connected

Nearly 3,000 providers with Network access

Almost 3,000 registered providers with Direct

16+ million demographic records in GaHIN's Master Patient Index

323,615 patient information queries as of 12/30/14

Implemented document interchange service, GeorgiaDirect XDR, with 20 Georgia hospitals

Recognized nationally and regionally for progress in interoperability



3WAYS

provider organizations can connect to GaHIN:

1. **Provider organization connects directly to GaHIN**
2. **Provider connects through a networked health information exchange (HIE)**
3. **Provider connects through their EHR vendor to a networked HIE or GaHIN**

A NETWORK OF NETWORKS

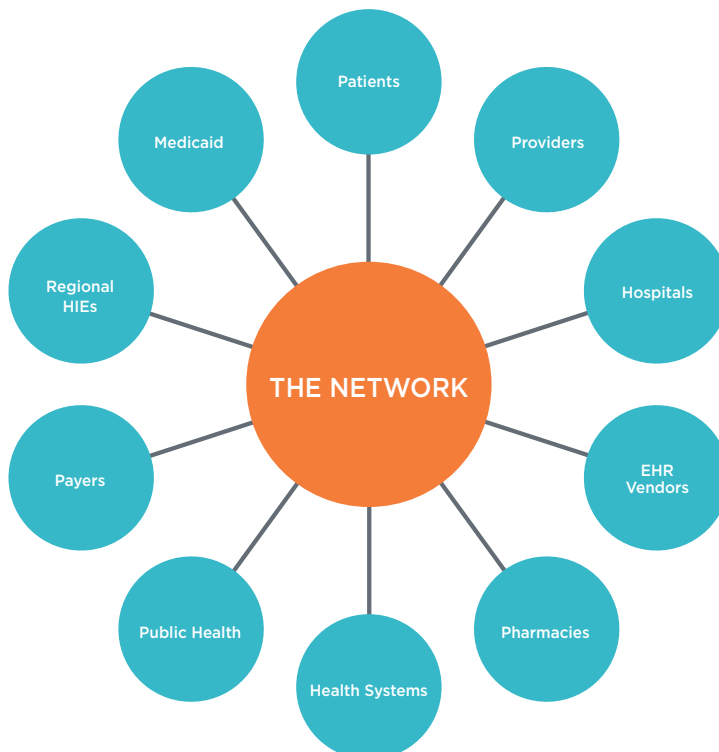
GaHIN uses a federated-hybrid model, called a “network of networks,” that allows patient information to remain with the treating provider; information only flows when there is authorization. This interoperable, standards-based network adds value to the IT investments already made by health systems and providers and helps keep HIE operations manageable and costs low. This approach also reduces barriers for providers to participate in the exchange.

During 2014 GaHIN executed agreements with all of Georgia’s regional health information exchanges. These specialty and geographically focused organizations are expected to fully operationalize their connections with GaHIN during 2015.

Collaboration and Cooperation

Through its Board of Directors, state and federal agencies, and a variety of strategic partnerships, GaHIN represents thousands of healthcare providers from all over Georgia with decades of combined healthcare industry expertise. This public/private collaborative also encompasses technology providers and stakeholders in business, technology, healthcare and academia.

Stakeholders have worked together to develop, implement and grow a technology, business and policy infrastructure to sustain GaHIN’s statewide “network of networks” health information transport model.



PRODUCTS AND SERVICES

GeorgiaDirect is part of the DirectTrust national network that lets providers securely send patient health information, such as referrals and reports, to other authorized healthcare professionals and patients. With GeorgiaDirect, providers can use the Internet to send and receive authenticated, encrypted health information directly with other trusted recipients, both within Georgia and nationwide.

Specialized projects based on GeorgiaDirect that are underway include dialysis, asthma, behavioral health and long-term care facilities. There are 20 active implementations of GeorgiaDirect with XDR integration at rural hospitals, large health systems and clinics.

GEORGIA DIRECT



Nationwide:

The DirectTrust network offers **access to 650,000 individual providers** within 33,000 health care organizations using over 200 certified EHRs.

Georgia:

There are **2,847 registered providers** in Georgia, and 95,000 transactions took place just in the fourth quarter of 2014.

GEORGIA CONNECTEDCARE



HealthWay

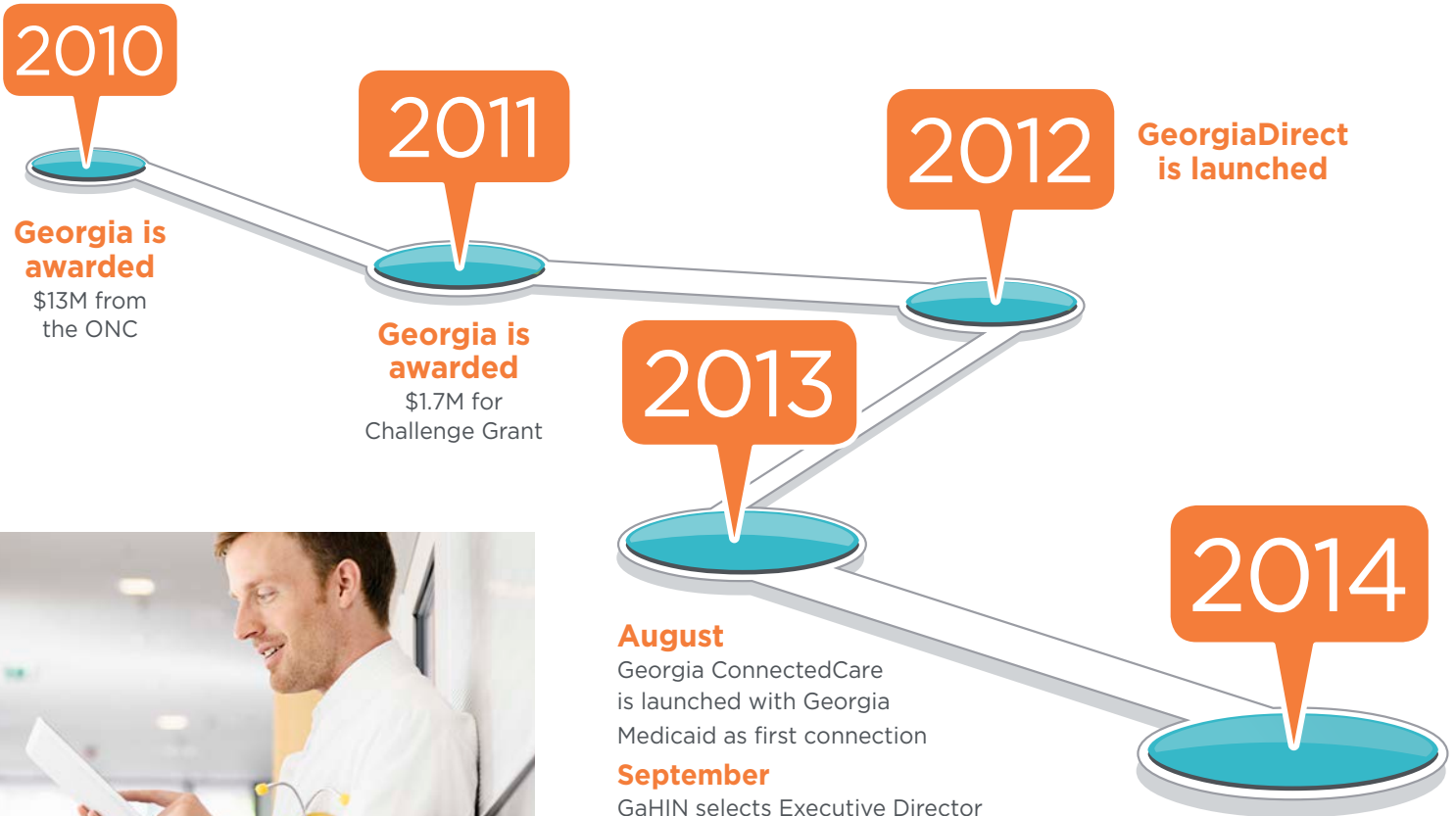
Georgia ConnectedCare is a query-based service that lets providers use their EHR to quickly access patient health data from hospitals, physician practices, state health systems and much more. Organizations and services that are part of Georgia ConnectedCare include:

- Medicaid health, pharmacy and dental health
- Immunization (GRITS) data and bi-directional submission gateway
- Web-based clinical portal for Medicaid providers without EHRs
- Public health gateway - eLab and Syndromic Surveillance reporting
- Connection to the National Network

Georgia ConnectedCare has proven to be a useful tool in streamlining the secure exchange of patient information, and contains:



GAHIN MILESTONES



GaHIN by the numbers

23 Hospitals	6,447 Providers
2 Nationwide Networks	16M Patient Records
5 Georgia State Agencies	7 Regional Health Information Exchanges

August

Georgia ConnectedCare is launched with Georgia Medicaid as first connection

September

GaHIN selects Executive Director and establishes operations

October

Georgia Public Health connects to the Network offering bi-directional GRITS

January

Emory Healthcare is the first health system to connect to the Network

February

Grady Health System connects to the Network and GaHIN connects to DirectTrust

April

GaHIN connects to HealtheWay, the National Network

September

Children's Healthcare of Atlanta connects to the Network

November

GaHIN and SCHIEx launch HealtheWay's first state-to-state HIE exchange



STRATEGIES AND PRIORITIES

GaHIN's priorities for 2015 and the years to come are centered on three key activities: growing the number of connected members, increasing the value offered by the organization and securing our financial future. This builds on the achievements of 2014, when we established the foundation for GaHIN and prepared the organization and statewide HIE Network for high growth through infrastructure development and product delivery.

In 2015, we will focus on developing and executing strategies to rapidly increase GaHIN membership and overall Network volume. This includes actively promoting statewide interoperability between healthcare providers

while continuing efforts to keep barriers to entry low. Increasing the volume of the Network creates intrinsic value by enticing and justifying investment from payers and other stakeholders, resulting in secure, stable forms of income for long-term GaHIN sustainability.

In the years ahead, we plan to deliver the next generation of health information exchange products to meet the needs of Georgia healthcare stakeholders and to further the sustainability of the Network. By 2017, we plan to reach our long-term goal of having 80% of Georgia providers being able to access their patient's health records via GaHIN.

Grow Connections

GEORGIA DIRECT

- Focus on long-term care and home health agencies
- Continue use case development with state agencies
- Increase provider adoption of general and XDR GeorgiaDirect connections
- Anticipate FY 2015 increase in adoption by more than 1,000 providers statewide
- Update GaHIN website to include a searchable Provider Directory

GEORGIA CONNECTED CARE

- Connect to all qualified health systems in and around Georgia
- Establish connections with federal agencies (example - Veterans Affairs, Social Security Administration)
- Complete connections to all qualified regional HIEs, including Federally Qualified Health Centers
- Support telehealth by connecting to Georgia Partnership for TeleHealth
- Continue new product development to serve vulnerable populations within Medicaid, DFCS, DPH, DBHDD, etc.

Increase Value

2015

- Medical image exchange
- Event notification services: payers and providers
- Laboratory results delivery
- Medication reconciliation
- More public health registries

Exploring for 2016

- Population health management
- Personal health record and patient access
- Advanced technology standards
- Event notification services: community
- Retail clinic connections
- Support for ACOs and PCMHs
- mHealth

Create Sustainability

- Sale of value-added services
- Payer membership fees
- Private and public-sector grants
- Private donations and business developments
- Continued pass-through funding from DCH's Division of Health IT

BALANCE SHEET AS OF DECEMBER 31, 2014

	TOTAL
ASSETS	
Current Assets	
Bank Accounts	
Full Analysis Bus Checkng (8309)	1,106,620.21
Total Bank Accounts	\$1,106,620.21
Other Current Assets	
Prepaid Expenses	143,593.75
Total Other Current Assets	\$143,593.75
Total Current Assets	\$1,250,213.96
TOTAL ASSETS	\$1,250,213.96
LIABILITIES AND EQUITY	
Liabilities	
Current Liabilities	
Accounts Payable	2,900.00
Total Accounts Payable	\$2,900.00
Total Current Liabilities	\$2,900.00
Total Liabilities	\$2,900.00
Equity	
Temp Restricted Net Assets	153,321.00
Unrestricted Net Assets	856,481.46
Net Income	237,511.50
Total Equity	\$1,247,313.96
TOTAL LIABILITIES AND EQUITY	\$1,250,213.96



BOARD OF DIRECTORS

2015 Executive Committee & Officers

Dennis L. White, MSIT, DHA (Chairman)

CEO, Alliant/GMCF

James R. (Jim) Morrow, MD (Vice Chairman)

President and CEO, Morrow Family Medicine, Medical Association of Georgia

Duane A Kavka (Secretary)

Executive Director, Georgia Association for Primary Health Care, Inc.

Glenn E. Pearson, FACHE (Treasurer)

Member at Large

Denise Hines, DHA, PMP, FHIMSS

Executive Director, GaHIN

Donna W. Hyland

President and CEO, Children's Healthcare of Atlanta

Dominic H. Mack, MD, MBA

Deputy Director of the National Center for Primary Care, Executive Medical Director/Principal Investigator GA-HITEC, Morehouse School of Medicine

Clyde L. Reese, III

Commissioner, Georgia Department of Community Health

“*In the future we will look at GaHIN and say... how in the world did we ever deliver care and practice medicine without this?*”

Dr. J. Patrick O'Neil

Director of Health Protection,
Georgia Department of Public Health



Directors

Barbara Barrett

Assistant Vice President of Human Resources, Langdale Industries, Inc.

James R. (Jim) Bracewell

Executive Vice President and CEO, Georgia Pharmacy Association

William (Clay) Campbell

President and CEO, Archbold Health Services

Dedra (Dee) Cantrell, RN

CIO, Emory Healthcare of Atlanta

Tod Citron

Executive Director and CEO, Cobb & Douglas Community Service Boards

Laura Ellis

Chief, Division of Health IT, Georgia Department of Community Health

James Garvie

Director of Compensation & Benefits, Southern Company

Paula Guy, RN

CEO, Georgia Partnership for TeleHealth

David Hefner

Georgia Health Sciences University

Marsha Hopkins

Chief Operating Officer, Department of Community Health

Jon Howell

President and CEO, Georgia Health Care Association

Warren S. Hutchings, MD

Chairman, Georgia State Medical Association

Morgan Kendrick

President, Blue Cross Blue Shield of Georgia

J. Alan Kent, FACHE

President and CEO, Meadows Regional Medical Center

Sharon King

Chief of Staff, Department of Community Health

Carol A. Ludwig, RPH

Pharmacy Chief, Department of Veterans Affairs

Deven Mattheus, MPM

Chief Clinical Integration Officer, Northeast Georgia Health System, HealthConnection HIE

J. Patrick O'Neal, MD

Director of Health Protection, Georgia Department of Public Health

Katie Rogers

Governor's Health Policy Advisor, State of Georgia

Thomas E. Sittnick

Director of the Office of Health Services, Department of Corrections

Jeffery White, MD

CEO, White's Pediatrics & North Georgia Clinical Research Center

Cindy Zeldin

Executive Director, Georgians for a Healthy Future



GEORGIA
HEALTH
INFORMATION
NETWORK

75 5th Street NW, Suite 600
Atlanta, GA 30308
866.233.8203

www.gahin.org